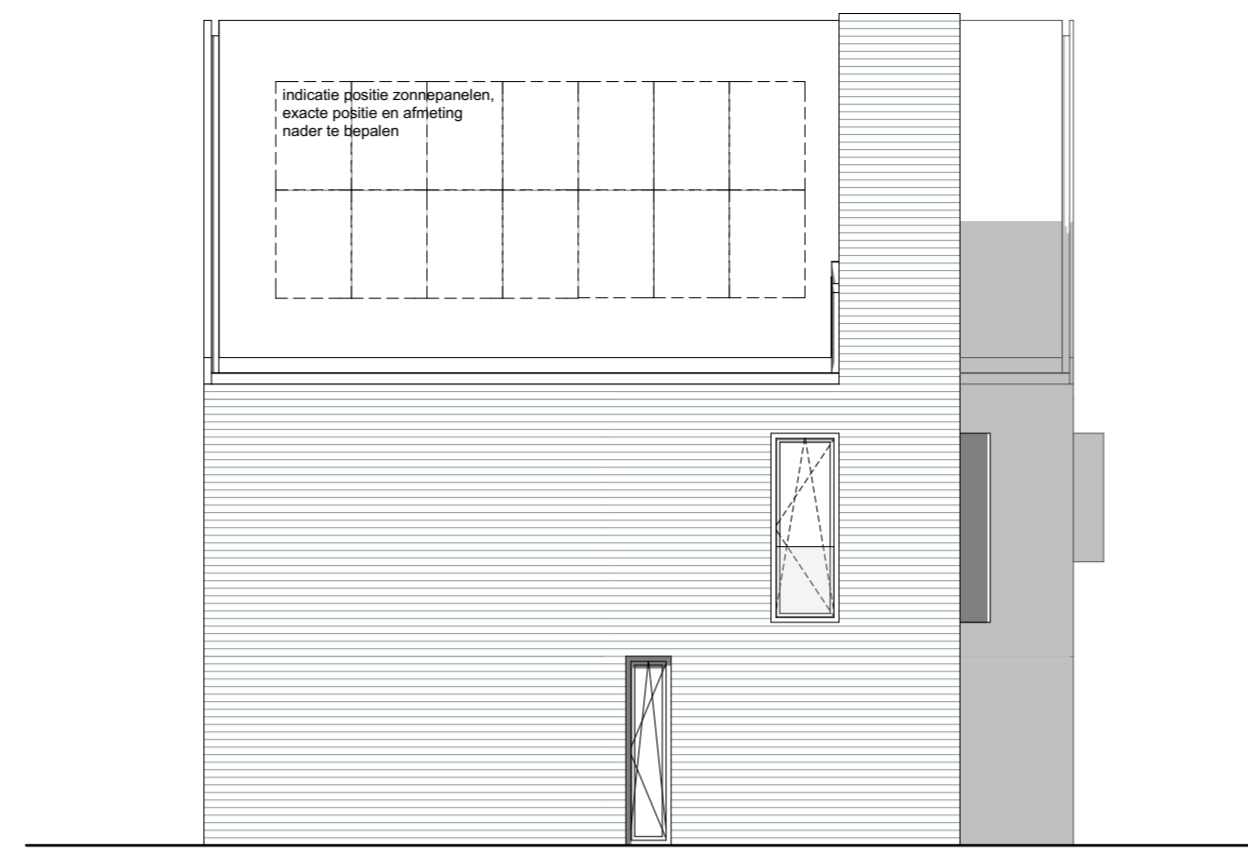




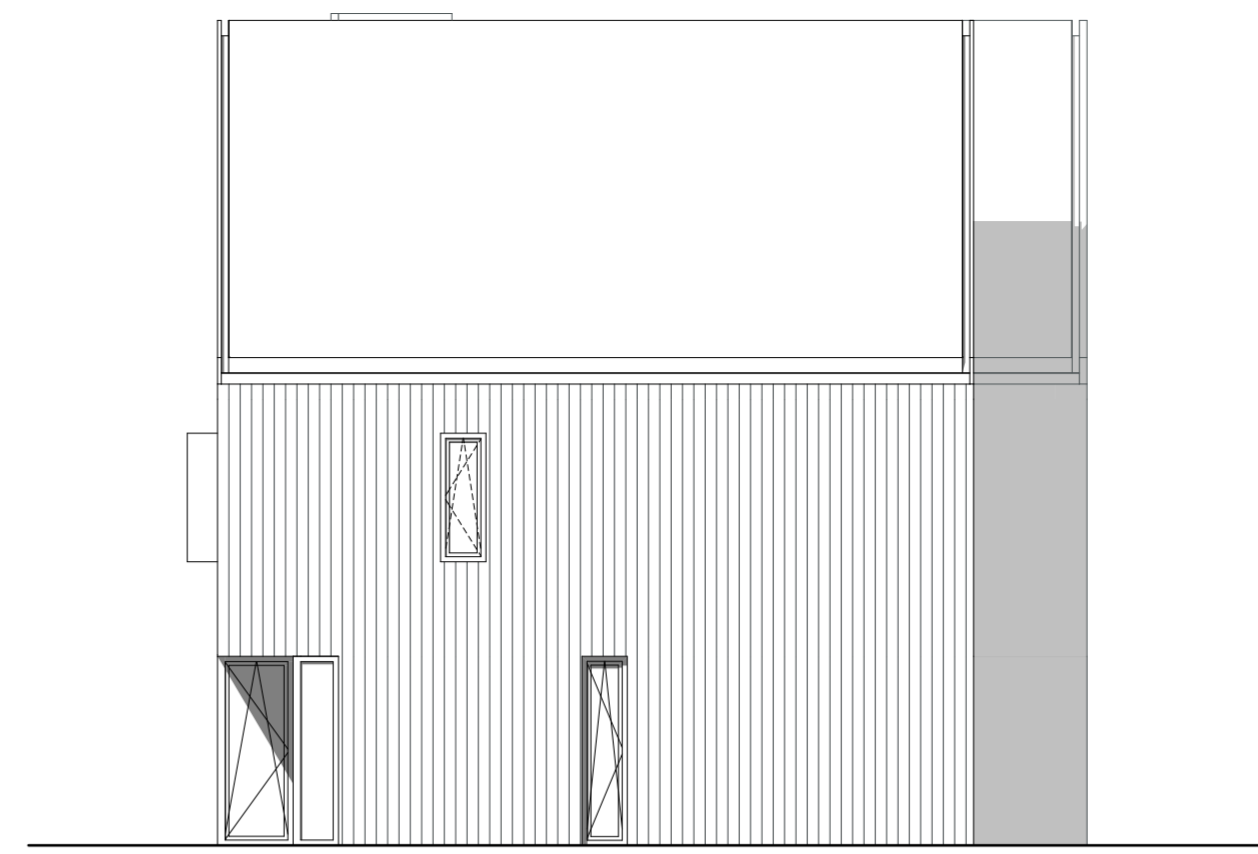
Voorgevel
1:100



Achtergevel
1:100

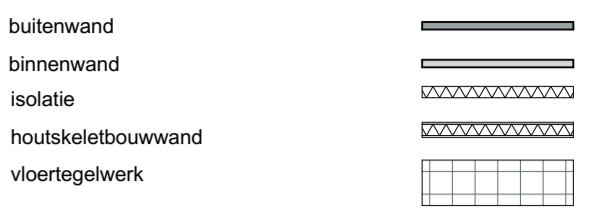


Linkergevel
1:100

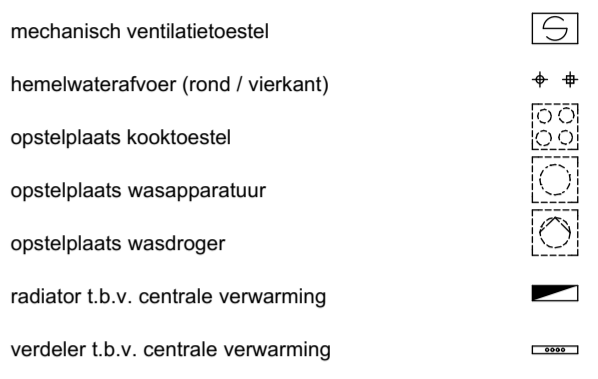


Rechtergevel
1:100

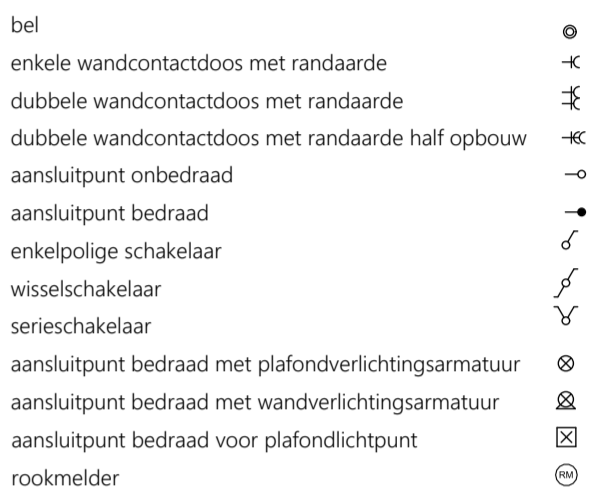
renvooi (materialen)



renvooi (installaties W)



renvooi (installaties E)



BVO tweekapper A (links)

Begane grond	63,4
Eerste verdieping	65,1
Tweede verdieping	65,1
Totaal	193,6 m²

BVO tweekapper B (rechts)

Begane grond	62,0
Eerste verdieping	65,1
Tweede verdieping	65,1
Totaal	192,2 m²

GO tweekapper A (links)

Begane grond	53,6
Eerste verdieping	53,7
Tweede verdieping	39,4
Totaal	146,7 m²

GO tweekapper B (rechts)

Begane grond	53,7
Eerste verdieping	53,7
Tweede verdieping	39,4
Totaal	146,8 m²

projectnaam
SYSSSELTSE LANEN

plaats
EDE

opdrachtgever
VOF Ede Stevin

tekeningnummer
03

fase
Verkooptekening

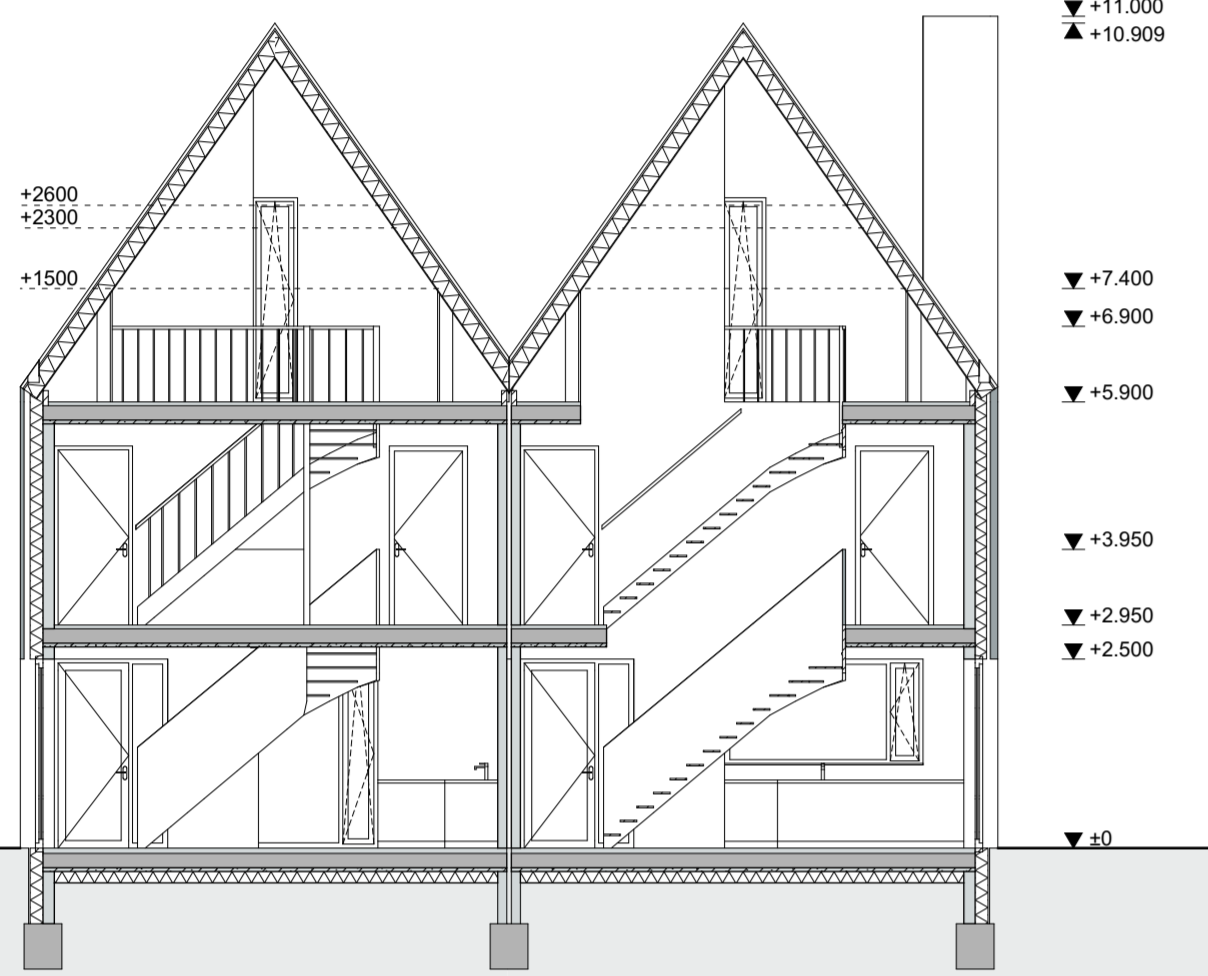
status
Definitief

architect
ZEEP architects and urban designers

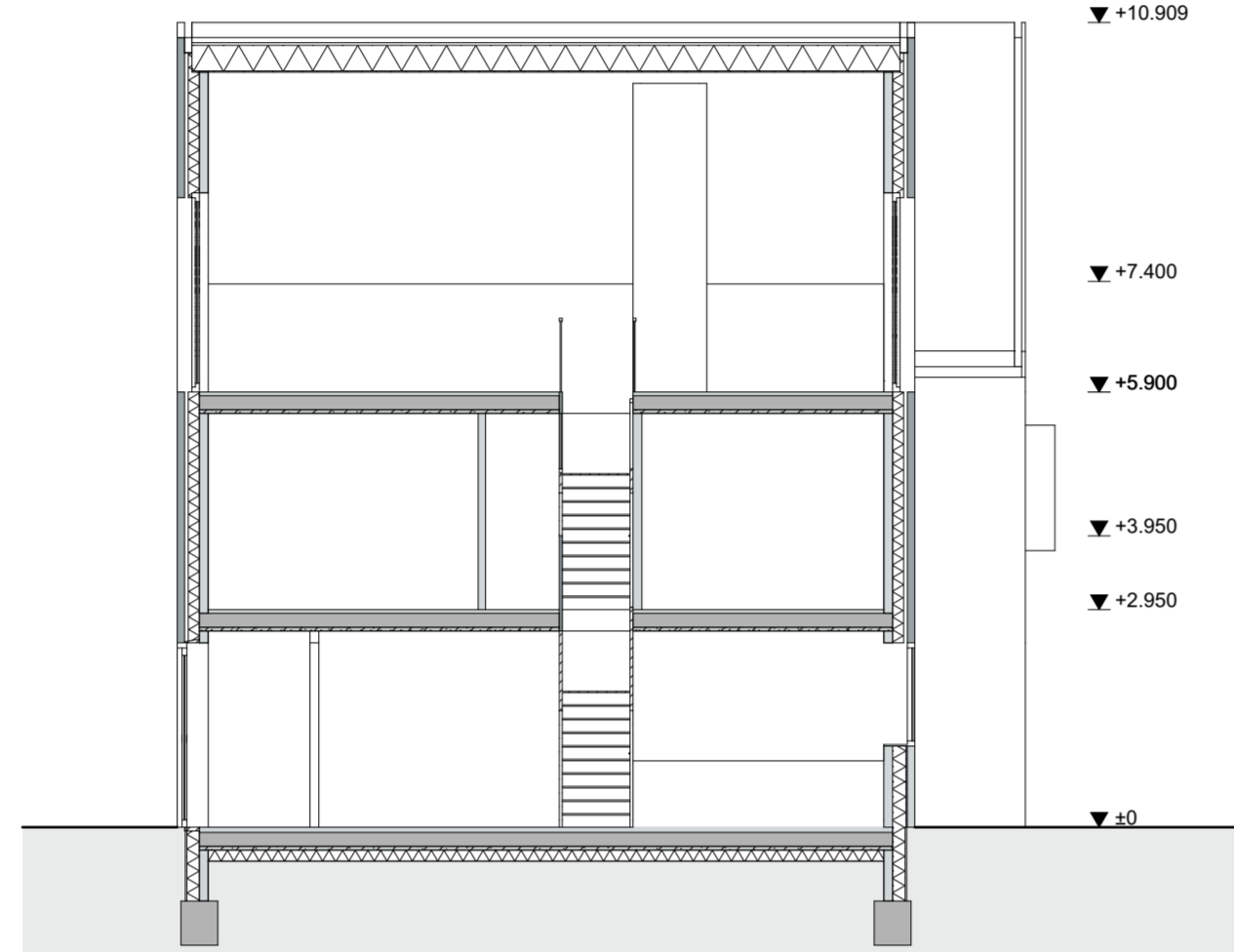
formaat
A1+

datum
21.12.2016

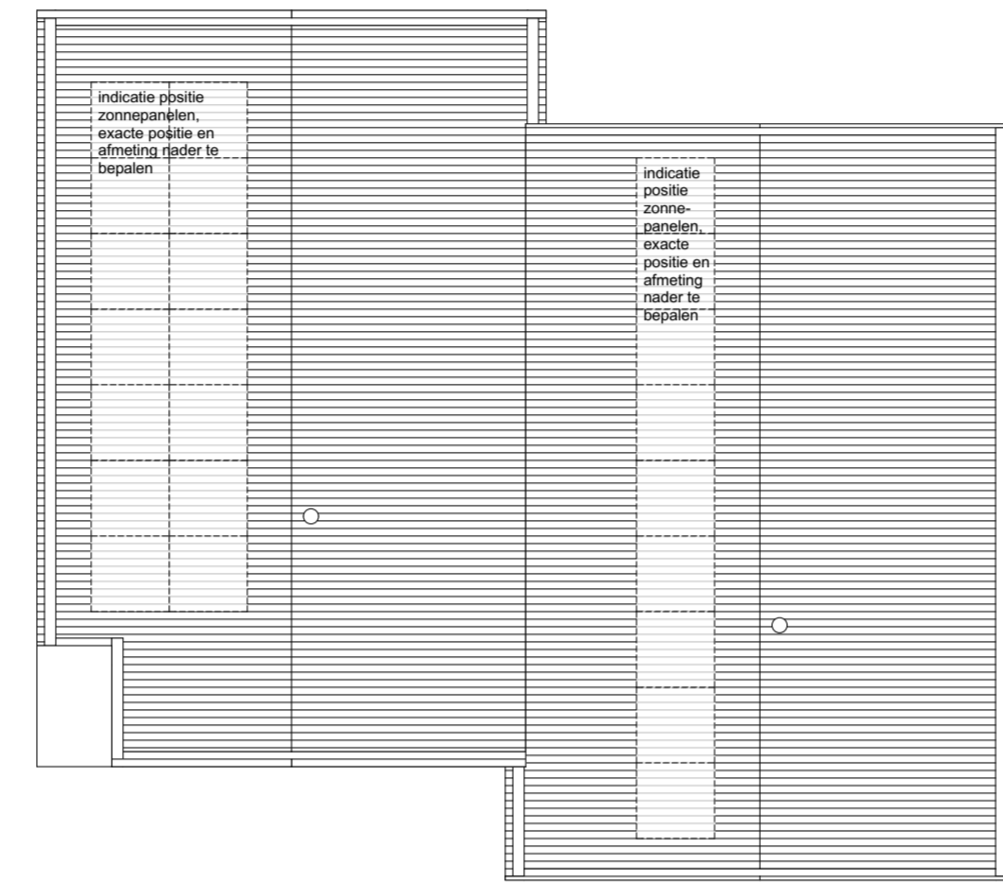
projectnummer
0073



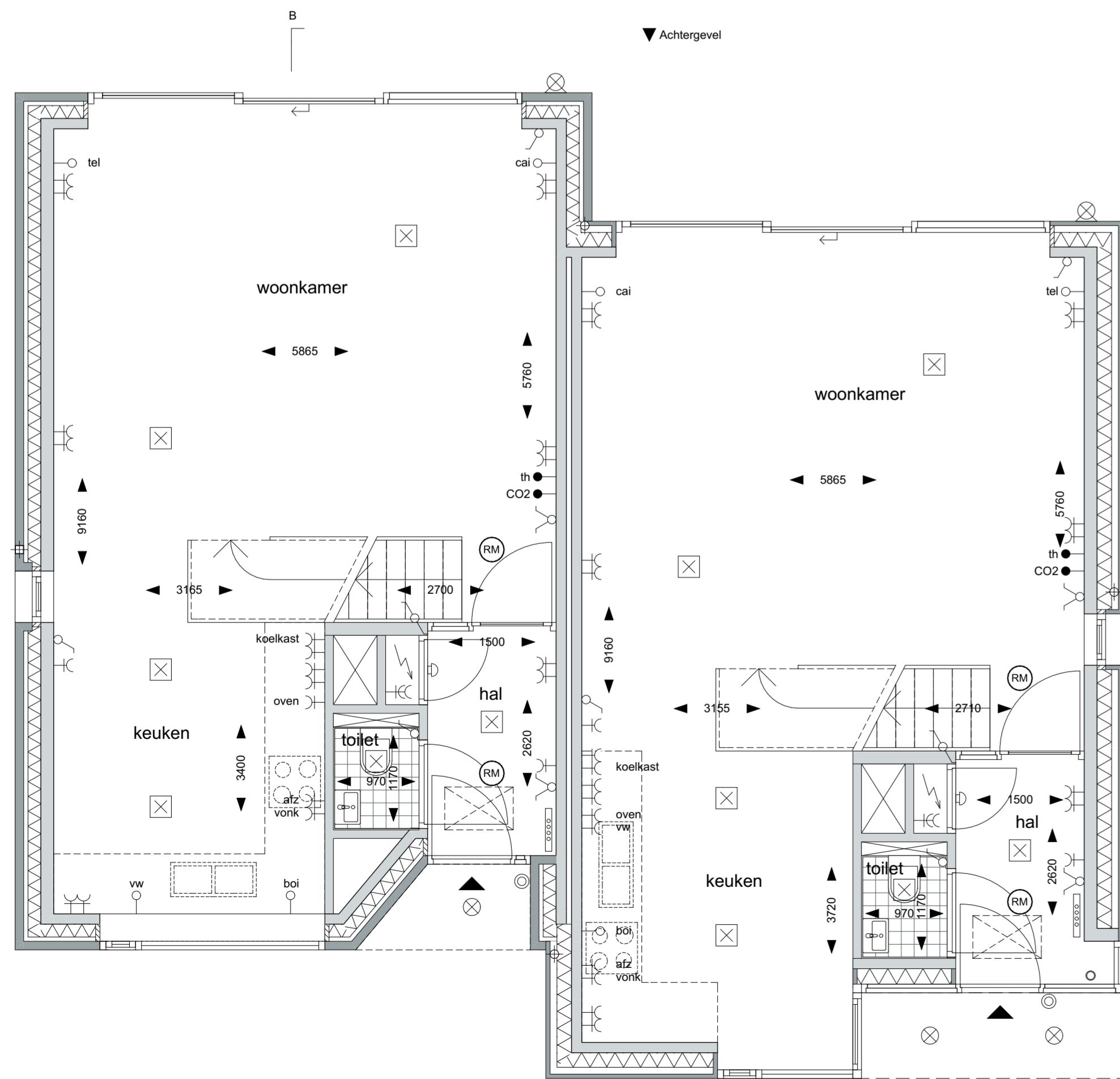
Doorsnede A
1:100



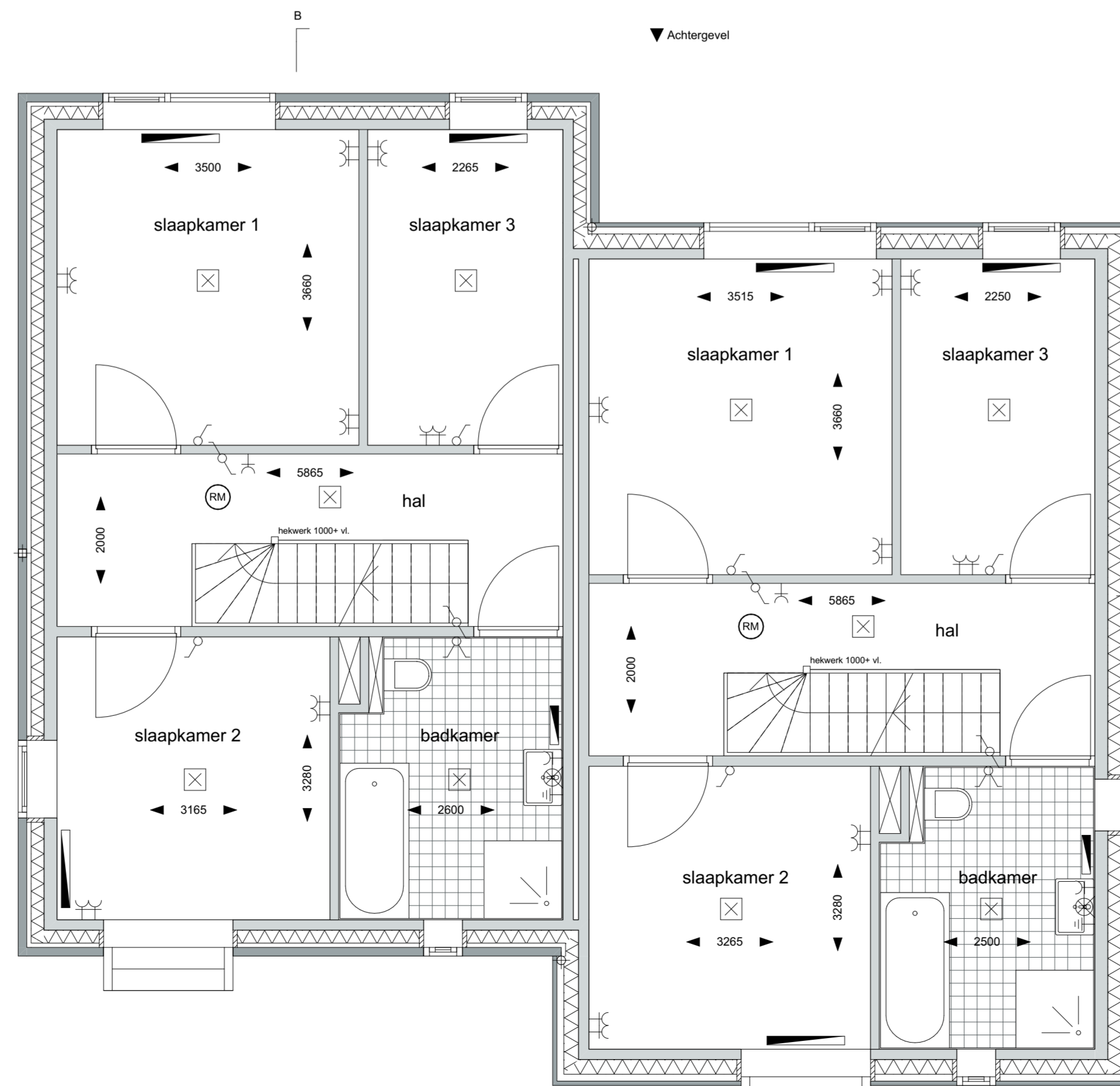
Doorsnede B
1:100



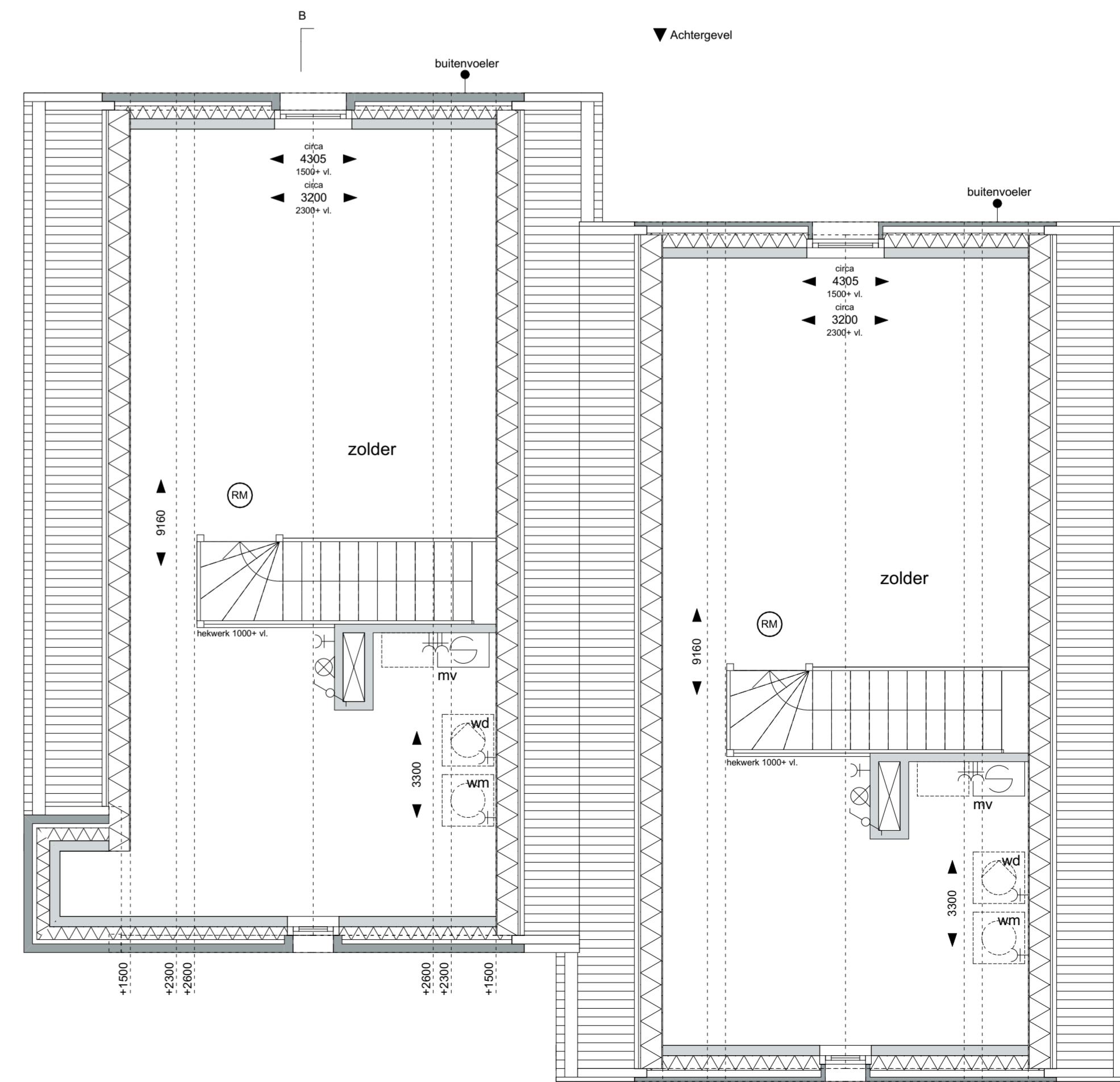
Dak
1:100



Begane grond
1:50



1e verdieping
1:50



2e verdieping
1:50